

# Bushy type Tomato

## Crop guide

Valid 2016 | 2017

### Seed and variety choice



- High yield
- Disease resistant
- Good quality fruits
- Preferred by the market

**Improved  
variety**

### Seedling raising

#### 1 Filling tray



#### Mix well



1 part top soil



2 parts cow manure



1 part sand

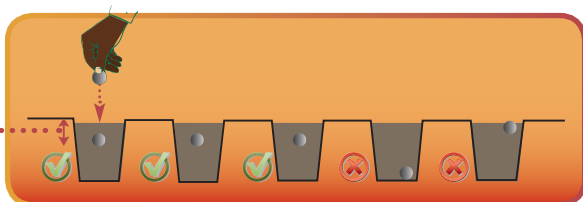
#### Sterilize the media



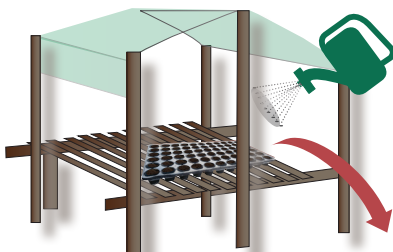
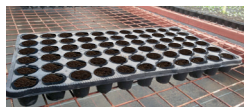
80°C for 30-40 minutes

#### 2 Sowing depth

Sowing depth = size of 2 seeds



### 3 Taking care of seedlings



4



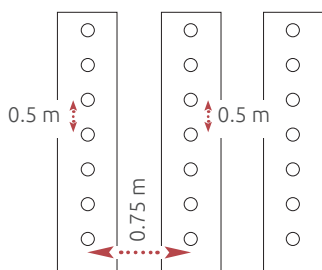
### 4 Hardening

Put outside 1 week before transplanting



## Land preparation and plant distance

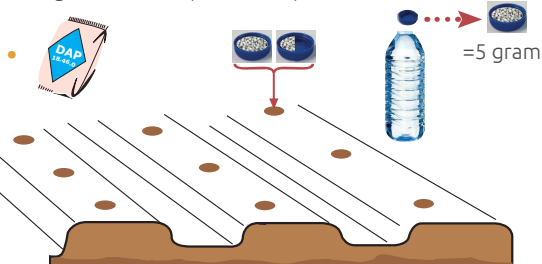
### Plant distance



10666 plants per acre

### Basal application

- Organic manure (if available)



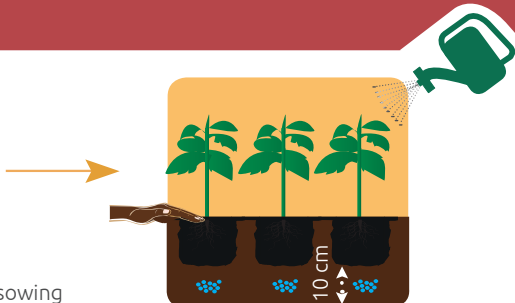
=5 gram

## Transplanting

Transplant late afternoon

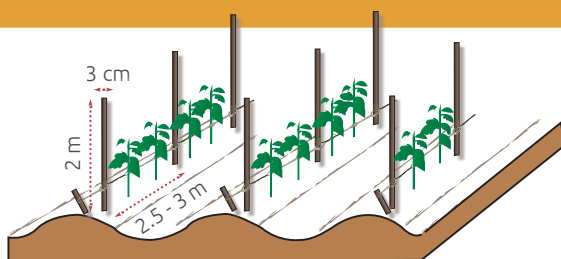


3-4 weeks after sowing



## Trellising

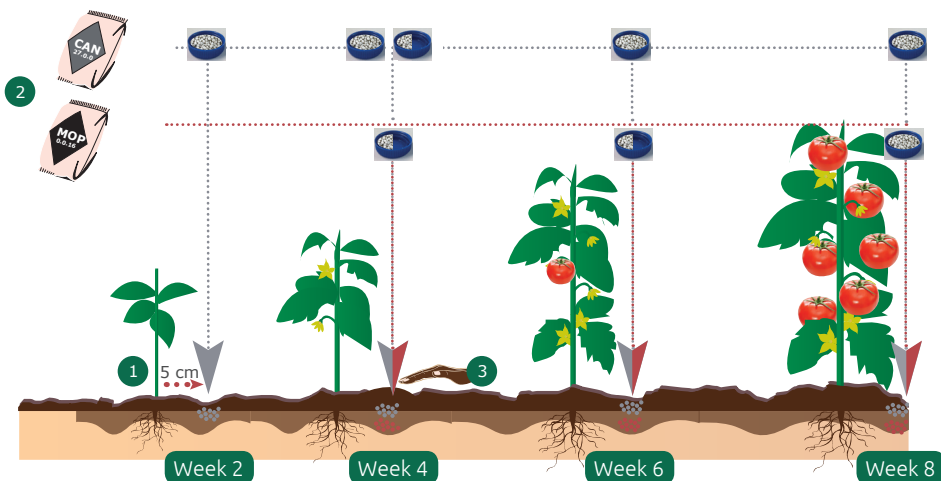
- Support plants
- Easy crop management
- Minimize diseases



1-2 weeks after transplanting

## Fertilization

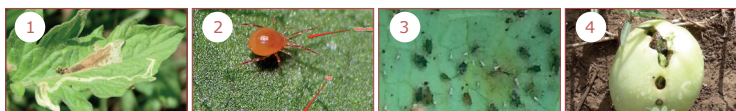
- 1 Make a small hole 5 cm away from the canopy of each plant for applying the fertilizer
- 2 Apply the fertilizer
- 3 Cover the hole



The fertilizer amount is based on 10,666 plants/acre

## Crop protection

### Insecticides



Active ingredient	Leaf miner	Red spider mite	White fly/aphid/Thrip/Mites	Caterpillar (Tuta absoluta)
Imidacloprid			👍	
Lambda-cyhalothrin		👍	👍	👍
Deltamethrin	👍		👍	👍
Abamectin	👍	👍		👍
Thiocylam oxalate	👍		👍	👍
Spinosad	👍			👍
Indoxacarb				👍
Lufenuron			👍	👍
Flubendiamide				👍
Thiamethoxam			👍	

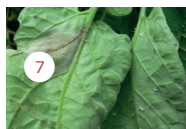
👍 = Recommended pesticides for the pest indicated.

Alternate active ingredients to prevent building up resistance.

## Fungicides

Active ingredient	Efficiency	Control
Chlorothalonil	Preventive	Broad spectrum
Mancozeb	Preventive	Broad spectrum
Azoxystrobin	Preventive	Early blight
Propamocarb	Preventive + Curative	Damping off
Difenoconazole	Preventive + Curative	Rust/ Early blight
Sulphur	Preventive	Powdery mildew
Dimethomorph+mancozeb	Preventive + Curative	Late blight
Phosetyl aluminium	Preventive	Damping off
Copperoxychloride + cymoxanil	Preventive	Late blight
Mancozeb+cymoxanil	Preventive + Curative	Late blight
Propineb/cymoxanil	Preventive + Curative	Late blight

## Infection risk late blight



Plant growth	Sunny weather	Rainy weather
Slow	Low	Medium
Fast	Medium	High

**Low:** spray a preventive fungicide every 5-7 days.

**Medium:** spray a preventive fungicide every 5 days and possibly a curative fungicide.

**High:** spray a preventive fungicide every 5 days always with a curative fungicide.

## Spraying techniques

Wear protective gear



Good weather



Good nozzle



Wash after spraying



Windy weather



Rainy weather



Leaking nozzle



Beware of excessive chemicals



### Do you need more information?

Please call +255 685 942 364

SEVIA | P.O. Box 7211 | Moshi

Visiting address | Lambo Mferejini | Hai |

[www.sevia.biz](http://www.sevia.biz)

