

African eggplant

Crop guide

Valid 2017

Seed and variety choice



**Improved
variety**

- High yield
- Disease resistant
- Good quality fruits
- Preferred by the market

Seedling raising

1 Filling tray

1a Mix the media well with following ratio:



1 part top soil



2 parts cow manure



1 part sand

1b Sterilize the media at 80°C for 30-40 minutes

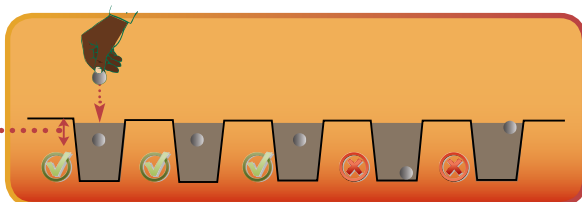


1c Fill the trays with the well prepared media

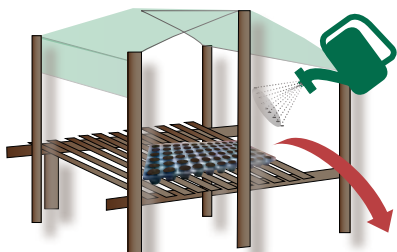


2 Sowing depth

Sowing depth = size of 2 seeds

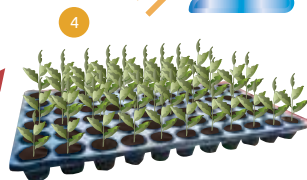


3 Taking care of seedlings



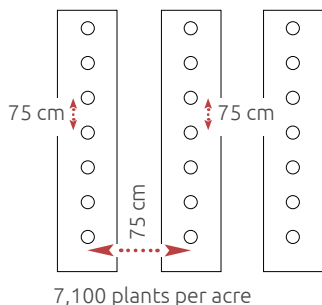
4 Hardening

Put seedling tray outside 1 week before transplanting



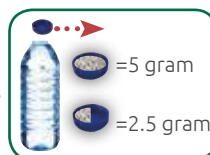
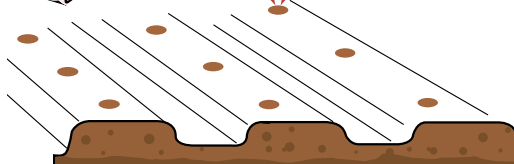
Land preparation and plant distance

Plant distance



Basal application

- Organic manure (if available)



Transplanting

Transplant late afternoon

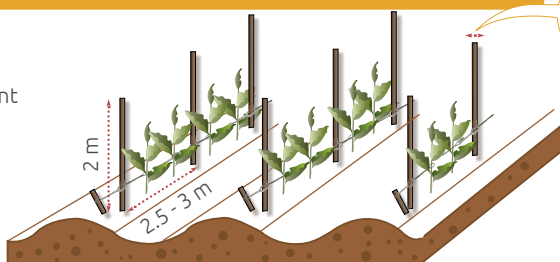


3-4 weeks after sowing



Trellising

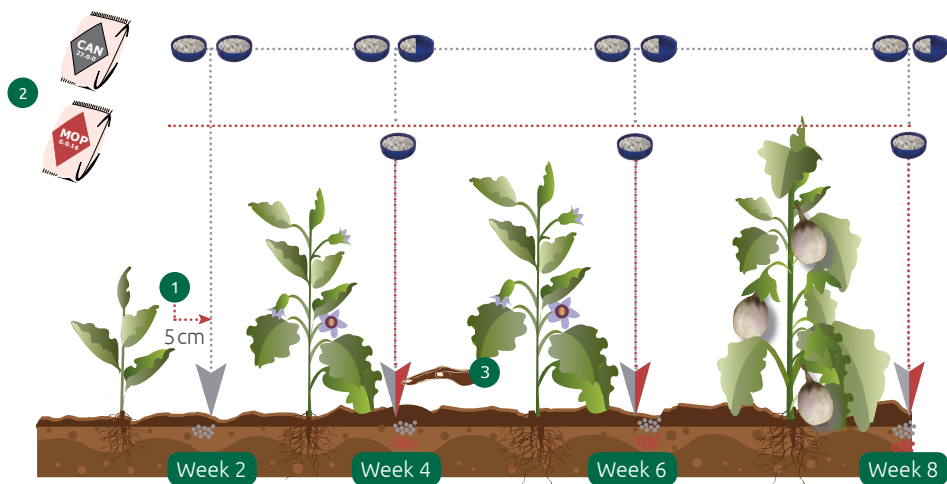
- Support plants
- Easy crop management
- Minimize diseases



1-2 weeks after transplanting

Fertilization

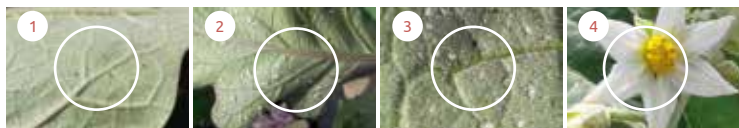
- 1 Make a small hole 5 cm away from the canopy of each plant for applying the fertilizer
- 2 Apply the fertilizer
- 3 Cover the hole



The fertilizer amount is based on 7,100 plants/acre

Crop protection

Insecticides



Active ingredient	Mites (1)	White fly (2)	Aphid (3)	Thrips (4)
Imidacloprid		👍	👍	👍
Lambda-cyhalothrin		👍	👍	👍
Abamectin	👍			
Dicofol	👍			
Thiocylam oxalate	👍	👍	👍	👍
Profenofos		👍	👍	👍

👍 = Recommended pesticides for the pest indicated.
Alternate active ingredients to prevent building up resistance.

Crop protection

Fungicides

Active ingredient	Efficiency	Control
Difenoconazole	Preventive + Curative	Rust
Copper oxychloride	Preventive	Bacterial leaf spot 5
Chlorothalonil	Preventive	Broad spectrum
Azoxystrobin	Preventive	Early blight
Propamocarb	Preventive + Curative	Damping off
Difenoconazole	Preventive + Curative	Rust/ Early blight
Sulphur	Preventive	Powdery mildew
Dimethomorph+mancozeb	Preventive + Curative	Late blight
Copperoxychloride + cymoxanil	Preventive + Curative	Late blight
Mancozeb+cymoxanil	Preventive + Curative	Late blight



Infection risk late blight

Plant growth	Sunny weather	Rainy weather
Slow	Low	Medium
Fast	Medium	High

Low: spray a preventive fungicide every 5-7 days.

Medium: spray a preventive fungicide every 5 days and possibly a curative fungicide.

High: spray a preventive fungicide every 5 days always with a curative fungicide.

Spraying techniques

Wear protective gear



Good weather



Good nozzle



Wash after spraying



Windy weather



Rainy weather



Leaking nozzle



Beware of excessive chemicals



Do you need more information?

Please call +255 685 942 364

SEVIA | P.O. Box 7211 | Moshi

Visiting address | Lambo Mferejini | Hai |

www.sevia.biz

